

LIFT WITH EASE

Efficient and ergonomic
material handling





Item No.: 95-SpeedyPickerAddOn

Speedy Picker Add-On



Weight (kg)	300
Gripping technique	Hook, Mechanical, Vacuum
Maximum capacity (kg)	25
Optional control	PSH, Balancing
Volt (V)	24
Industry	Distribution centers and warehouses
Height (mm)	2346
Configuration height (mm)	1838



The Speedy Picker is an efficient and ergonomic lifting tool for warehouses and distribution centers. It consists of a crane arm and a lifting tool that is connected to a compressor. These are installed onto the forklift truck that is driven by operator during the workday. This way, the lifting tool is always at hand. As the operator no longer needs to manually lift the loads, the risk of injury from lifting is minimized. With the Speedy Picker, work can be carried out faster, easier, and safer.

Ergonomic crane arm for forklift trucks that streamlines warehouse work

Warehouse work and order picking is a repetitive job that needs to be fast-paced and streamlined. Often, it leads to awkward working positions and bad postures, which is a major risk factor for wear-and-tear injuries and general fatigue that may result in lower productivity. The Speedy Picker lifting solution can manage up to 120 lifts per hour, which allows you to maintain a productive and efficient operation, with fewer injuries and improved ergonomics. The lifting tool is always ready to lift!

The Speedy Picker maintains its stability even when the crane arm is open. So, you don't need to fold out support legs while using it. Continuous and efficient usage without time-consuming stops.

Lifting tools for warehouses and distribution centers

The Speedy Picker truck crane arm can be equipped with different lifting tools, to lift goods and load or unload the truck. Read about the different models here:

- Customized lifting tools

Speedy Picker can be equipped with a customized lifting tool to lift, for example, sacks, cans or boxes. The truck arm is compatible with both vacuum, mechanical and magnetic lifting aids for gripping odd angles. The possibilities are endless. Just contact our competent sales engineers and ask for a lifting solution customized for your needs.

- Multi-gripper

If you need to have several different lifting tools for the various materials in your warehouse, we offer a tool with a twist-and-lock system that makes it possible to switch between different vacuum applications and even a hook. By having a multi-gripper connected to your crane, you can easily lift the different objects in different ways, but all with the same machine.

- Standard lifting tools

The standard lifting tool for boxes starts automatically when placed firmly on the box. The operator can then lift and maneuver the box effortlessly. This lifting tool has been ergonomically designed for both left and right-handed operators, and has a one-button control panel. This button is used to release the load when it has been placed down. The tool's unique tilting function allows the operator the versatility of choosing between picking up loads from the top or from the side. This makes it easy to pick up products from the top of a high stack, or to work in confined spaces and in low-built areas.

Flexible forklift crane arm

The agile and flexible crane arm is logically placed in the middle of the forklift on the truck. This means quicker pick-ups from both sides and behind the forklift truck. The crane is low-built for work in low spaces, which is common in warehouse aisles. When work is done, the operator simply places the lifting tool into one of the docking stations, folds the crane arm into "parking mode", and drives safely to the next spot.

For lift crane arm with different mountings

Speedy Picker is available both as a permanent installation or as a single unit with a crane and compressor and lifting tools that are attached to an existing forklift. The individual unit (Add-On) can be connected to different trucks and can also be switched off when you want to free up the forklift for other tasks. A flexible solution for the user!

The different mounting methods mean that the forklift crane is suitable for virtually all articulated trucks. In cooperation with you and the forklift manufacturer, we will find the solution that is best suited to the specific forklift.

Resilient, powerful and safe

Speedy Picker is a cost-effective option that can handle several shifts in an operation.

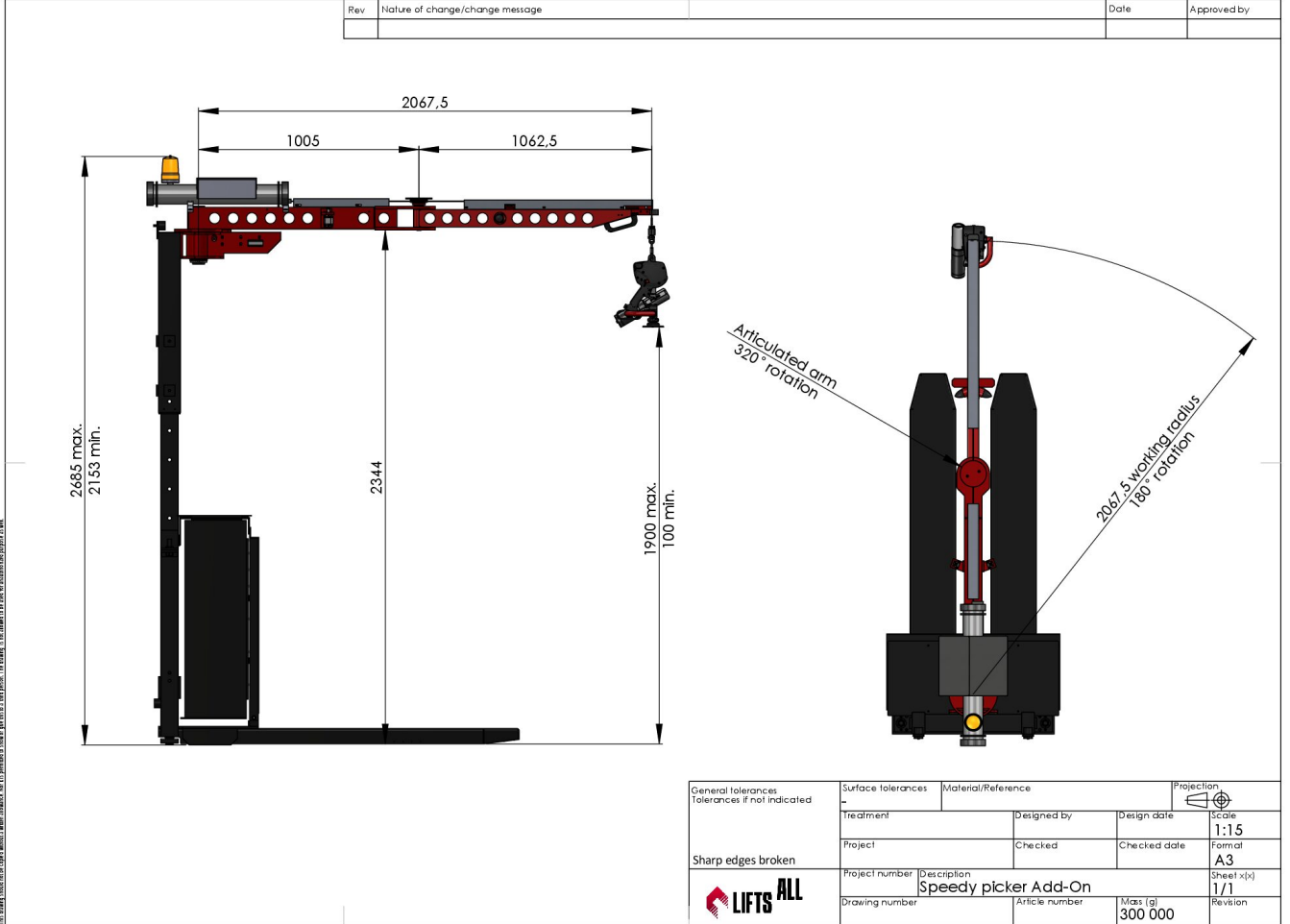
- Speedy Picker uses the truck's own battery for its energy supply, meaning the operator does not have to keep track of the charge.
- It only consumes energy during the lift itself (around 3-5 seconds), which means it is very durable and energy efficient.
- Available in three different powers 1.3, 2.6 or 3.9 Kw and consumes energy only during the actual lift (about 3-5 seconds).
- The Speedy Picker weighs only 300 kilograms, allowing for a higher payload before the truck's maximum load is exceeded.

Prevent wear and tear injuries

A warehouse worker can often lift 120 packages in the course of an hour. This often means that a single person is burdened with 15-16 tons during an eight-hour working day (source: Handelsnytt). According to the Swedish Work Environment Authority's regulations, the employer must arrange the workplace so that the risk of strain disorders is reduced or avoided (Arbetsmiljöverket). This can mean, among other things, using technical aids. Instead of straining and wearing out the body with heavy lifting, Speedy Picker can carry the load, while the warehouse picker maintains speed and precision.

*The patent application for Speedy Picker's unique technology is pending (20-12-01).

Drawings





CONTACT US

USA

Lifts All Inc.
728 William Blount Dr,
Maryville, TN 37801
USA
E-mail: info@liftsall.us
Telephone: +1 865-324-2014
Website: liftsall.com

HEAD OFFICE WORLDWIDE

Lifts All AB
Passadvägen 10
176 67 Järfälla
Sverige
E-mail: lifting@liftsall.se
Telephone: 08-754 90 15
Website: liftsall.com